



H224



H225



H226



H244



H227



H228



H233



H232

HARKEN MICRO BLOCKS

Small blocks with high load capabilities, but light weight. Accepts up to 1/4" line, 1200 pound load, 7/8" diameter sheave.

H224	Single	\$10.75
H225	Single w/Becket	\$12.40
H226	Double	\$27.05
H227	Double w/Becket	\$29.20
H228	Triple	\$38.70
H231	*Triple w/Becket & Cam	\$86.35
H233	Cheek	\$14.60
H244	Fiddle Micro	\$31.60
H232	Traveler (*not shown)	\$22.50



H082



H083



H084



H092



H166



H167



H353

HARKEN BULLET BLOCKS

Medium size blocks that work well for control line or jib sheeting lines. Accepts up to 5/16" line, 2000 pound load, 1 1/8" diameter sheave.

H082	Single	\$13.75
H083	Single /Becket	\$16.35
H084	Double	\$37.25
H092	Cheek	\$16.70
H166	Single w/Swivel	\$24.20
H167	Single w/Swivel & Becket	\$26.95
H353	Traveler	\$27.10

HARKEN MICRO, BULLET & BIG BULLET BLOCKS

Harken makes more blocks than you might believe there would be a use for. We have selected several that, we believe, will fill most catamaran sailor's needs. We carry all Harken products. If you don't see what you need, order it and we will get it.



H125



H126



H023

HARKEN 16MM AIR BLOCKS

Harken's newest small blocks for control lines. Accepts up to 7/32" line, 900 pound load, 5/8" sheave diameter. Ultra light weight.

H404	Single	\$12.85
H405	Single w/Becket	\$14.70
H406	Double	\$26.70
H407	Double w/Bckt	\$29.20

AUTO RATCHET BLOCK

BY RONSTAN

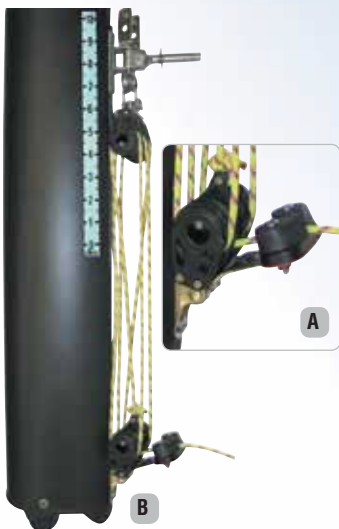
Perfect for spinnaker sheet turning blocks. This Ronstan block is free wheeling at low wind velocity. As the wind velocity increases the pressure on the sheave automatically engages the ratchet. The sheet rope is never trapped in the sheave and can slide out the same as any other ratchet block without first pulling in and then releasing. 55mm sheave.

RF56101 Auto Ratchet \$70.95

HARKEN BIG BULLET BLOCKS AND DINGHY BLOCKS

Big blocks accept up to 3/8" line, 2000 pound load, 1 1/2" sheave.

H125	Single	\$24.85
H126	Single w/Becket	\$27.80
H023	Dinghy Single w/Swivel	\$20.97



POWER DOWNHAUL SYSTEM COMPONENTS

Major components from the Power Downhaul System are available and listed below:

- H291S** Harken mini swivel control cleat assy. w/cam **\$50.25**
- H226S** Harken double micro block with twist shackle for gsnck ring (H16) or lower block (H18) **\$22.30**
- H225S** Harken single micro block w/becket and shackle for lower block (H16) **\$10.30**

A NEW 6:1 DOWNHAUL KIT

Downhaul system for Hobie 14 and 16. Now Class Legal. Kit comes complete with Harken carbo triple block and triple with cleat. Includes class approved attachment for base of mast, all hardware and line. Use with the gooseneck slide kit # 1511.

2089 6:1 Kit **\$162.00**

B DOWNHAUL SCALE

Can you ever remember where the downhaul was set that day you "smoked" everyone. This handy stick on scale takes the guess work out of setting the downhaul.

2082 Each **\$2.50**



DOWNHAUL/ HALYARD SHEAVE

Ease raising the sail and/or adjusting the downhaul with Harken ball bearing sheaves. They really make the job a whole lot easier. A direct replacement for the sheaves that came with the early Hobie 17's.

H160 Each **\$9.95**



EYE STRAP FOR BOOM VANG

Heavy duty eye strap for connecting boom vang at the mast base rather than at the trampoline slot in the cross bar.

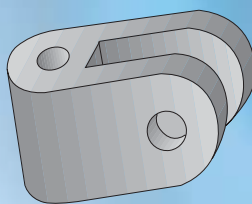
2072 With Fasteners **\$3.19**



REMOVABLE SHEAVE TRAP RIG BLOCK

This is the block we include in our basic trap rig kits. No need to cut wires to install this block. Simply remove the clevis pin that acts as the sheave axle, slide the sheave out of the frame, place the frame through the trap wire thimble and reinstall the sheave.

3103 Each **\$8.19**



TRENTEC SUPER GOOSE

Adds convenience and security of attachment at the boom to mast connection. Replace the vertex that connects the boom pin to the gooseneck yoke assembly on the mast. Custom made for the Hobie 18, machined from a block of 6061-T6 aluminum and hard coat anodized. Will not bend and open up no matter how strong the wind. Go a step further and permanently secure the clevis pin that connects that Super Goose to the boom pin with a cotter key. Replace the nut and bolt connecting the vertex to the mast yoke with a 20304 ball lock pin.

1510 Each **\$22.05**



GOOSENECK BEARING

Eliminates drag and prevents gouging the gooseneck slide on Hobie 14, Hobie One-14 (Holder) Monohull and Hobie 16 luff track. Delivers a fantastic improvement in downhaul adjustability!

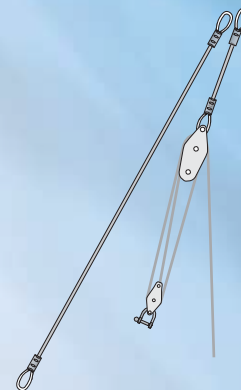
1511 Kit **\$8.25**



HALYARD GRIP

Keeps those halyards close in to the mast and out of the way so that the jib doesn't hang up on them. Molded from strong Delrin and contoured to the curve of the mast. One on each side of the H16 mast does the trick.

114 Each w/hardware **\$4.99**



HOBIE 16 "AUSSIE" JIB HALYARD

Reduces mast compression by 66%. Allows easier tacking, better mast rotation and consistent mast bend! Complete kit includes hardware, 70' (Dyneema® or equivalent) halyard line, zippered pouch, and instructions. Racing class legal.

80660000 Kit **\$249.00**



H228



H231

HARKEN TRIPLE W/ BECKET & CAMMATIC

Perfect for H16 or H17 downhaul.

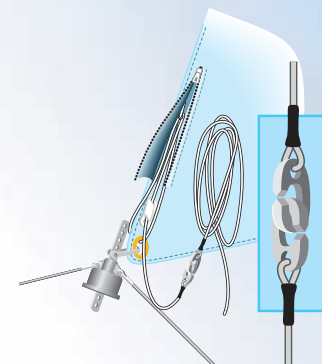
- H231** Each **\$86.35**
- H228** Each **\$38.70**



HOBIE "AUSSIE" HALYARD RING

The Aussie Halyard Ring makes engaging and disengaging the halyard ring from the halyard hook a real snap. This device keeps everything at the right angle. Welded one piece design. Hobie 18 ring has a twist shackle with a captive clevis pin so there are no parts to lose.

3064 Each **\$32.89**



L'IL SISTER CLIPS

The answer to "What to do with all the jib halyard?" L'il Sister Clip speeds the untie and retie of your H18 jib halyard. Includes both segments of jib halyard.

CM7732 Set **\$16.50**

HOIST N' TUNE



CONNECTORS



BOW SHACKLE - THREADED PIN

Part #	Pin Dia.	Width	Length	Max Ld#	
SP150061	1/4"	9/16"	15/16"	4400	\$7.75
SP150081	5/16"	11/16"	1 1/4"	6600	\$10.50



"D" SHACKLES - THREADED PIN

Part #	Pin Dia.	Width	Length	Max Ld#	
SP150041	5/32"	3/8"	5/8"	1100	\$4.50
SP150051	3/16"	1/2"	11/16"	2640	\$5.50
SP150052	3/16"	5/8"	15/16"	2640	\$5.75
SP150053	3/16"	5/8"	1 7/16"	2640	\$6.25



SAFETY SHACKLE WITH 1/2 TURN CAPTIVE PIN

Part #	Pin Dia.	Width	Length	Max Ld#	
SP185205	3/16"	1/2"	1"	2640	\$3.60
SP180005	3/16"	5/8"	1 7/16"	2640	\$3.85
SP180006	1/4"	7/8"	1 5/8"	4400	\$6.00



TWIST SHACKLE WITH 1/2 TURN PIN

Part #	Pin Dia.	Width	Length	Max Ld#	
SP170005	3/16"	1/2"	7/8"	2640	\$7.35
SP170006	1/4"	9/16"	1 3/8"	4400	\$11.75



SWIVEL SHACKLE

Complete with clevis & split rings. Align blocks, Fittings, etc. B-094 is extra heavy duty.

Part #	Pin Dia.	Width	Length	Max Ld#	
B094	1/4"	1/2"	11/2"	1000	\$15.99



FAST SHACKLE

The Fast Shackle was created for the jib clew blocks on the Hobie 16 & 18. It's a halyard shackle and an Avibank ball lock pin permanently wired to the shackle so it won't drop in the drink when the blocks are released from the jib clew.

3062	Each	\$28.19
------	------	---------



SNAP SHACKLE

Makes it easy to remove expensive mainsheet systems from your boat when it's parked on the beach or for ease of take down and set up for trailering.

20803	Each	\$24.10
-------	------	---------



SPARE PARTS - ALL PACKAGED IN 12" ZIPPERED POUCHES

	H14	Wave/Get	H16	H17	H18	H20
Shackle tool	•	•	•	•	•	•
2 Drain plugs w/gskts	•	•	•	•	•	•
Pair of rudder pins	•	•	•	•	•	•
Clevis pin set	•	•	•	•	•	•
3/16" Bow shackle	•	•	•	•	•	•
1/4" Bow shackle	•	•	•	•	•	•
Twist shackle						•
Mast bearing(s)	•		•		•	
3 Batten tie lines	•	•	•	•	•	•
1 Ft. sail repair tape	•	•	•	•	•	•
Part Number: 303-	05	08	06	14	07	20
Price:	\$68.99	\$51.99	\$65.99	\$71.99	\$87.99	\$71.99

KEEPER PINS

Great little helpers for quick rudder removal. Forget the aggravation of straightening those cotter pins! A definite plus for trailering. Stainless Steel.

20501	5/16" Diameter	\$.31
20502	3/8" Diameter	\$.62
20503	Safety Pin	\$.57

BALL LOCK PINS

Take the hassle out of rigging and de-rigging your boat. Replace 3/16" and 1/4" clevis pins that use ring dings with easy-to-use push button pins. These "quick pins" are usable in a variety of places on your boat and will not work free by themselves. Use them anywhere a clevis pin can be used! Caution is advised when using these for standing rigging as some inspection or maintenance of the ball lock system may be required to avoid a de-masting.

BALL LOCK PINS

	FSTAY SHRDS	HIKING STICK	OUTHHAUL	GOOSE-NECK	TRAVELER CAR	JIB TACK
20301	3/16"x3/4" Cup Head				14,16,17	
20302	1/4"x3/4" Cup Head	•	18,21			
20303	1/4"x1 1/4" Ring Hd	Std				
20304	1/4"x1" Ring Head			•		
20305	1/4"x1" Cup Head			•		
20306	#20305 w/Tack shackle & lanyard		20		18,20,21	•
20307	1/4"x1 1/2" Cup Head	Extendables				
20311	3/16"x3/4" Ring Head	Old H14		•	14,16,17	
20312	1/4"x3/4" Ring Head	•				
20313	3/16"x1/2" Ring Head				14,16,17	
20314	1/4"x1/2" Ring Head	•				
20310	8" X 1/16" Wire Keeper with NicoPress Sleeves					\$2.00



CONVENIENCE PARTS

	H16	H17	H18
QR Pin for forestay adjuster	•		
Fast shackle or jib tack shackle	•		
Quick release pin for main traveler car	•	•	
Quick release pin & shackle for main traveler car			•
Quick release pin for hiking stick	•	•	•
Shockcord hooks(4) for trapeze shock cord	•	•	•
Quick release pin for outhaul		•	•
Quick release pin for boom to mast		•	•
Safety pins for rudder pins	•	•	•
Part number: 303-	11	15	12
Price:	\$83.99	\$82.99	\$82.99

CLEVIS PIN ASSORTMENTS

For Hobie Wave, Getaway, 16 and late model 14. Kit contains appropriate 1/4" clevis pins, 3/16" clevis pin for traveler car, 1/4" clevis pin for mast step link. Split rings are included.

30303	H16/14 Set	\$6.99
30302	Wave/Getaway Set	\$6.99

CLEVIS PIN ASSORTMENT

For Hobie 17/18. Kit contains 4 each 1/4" clevis pins and 1 each 1/4" headless clevis pin for mast step. Split rings are included.

30304	H18 Set	\$6.39
30317	H17 Set	\$7.99